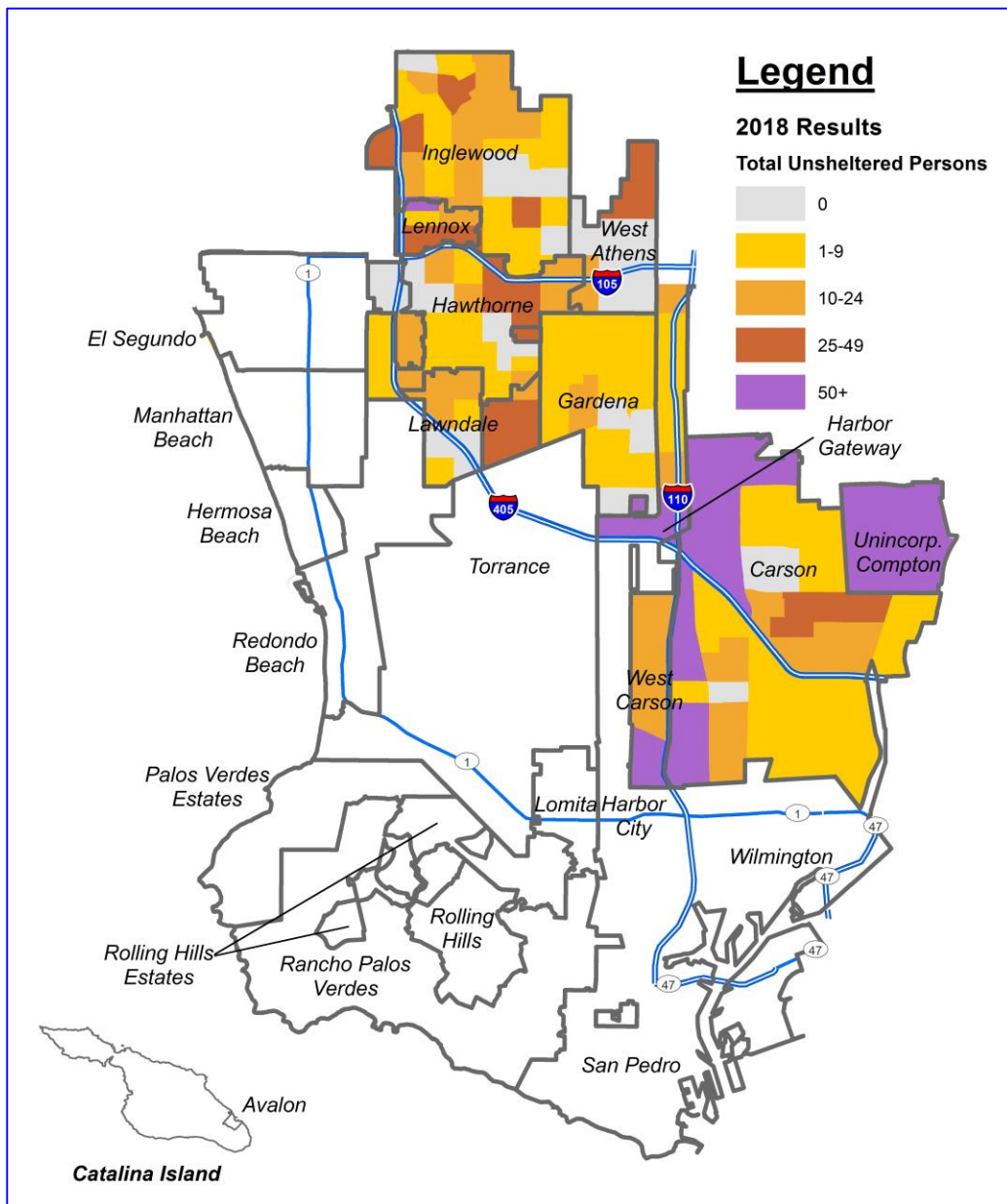




# 2018 Greater Los Angeles Homeless Count

## Los Angeles County Supervisorial District 2 in SPA 8 *2,183 Persons Homeless* on January 24, 2018



Data source: Los Angeles Homeless Services Authority, LAHSA.org

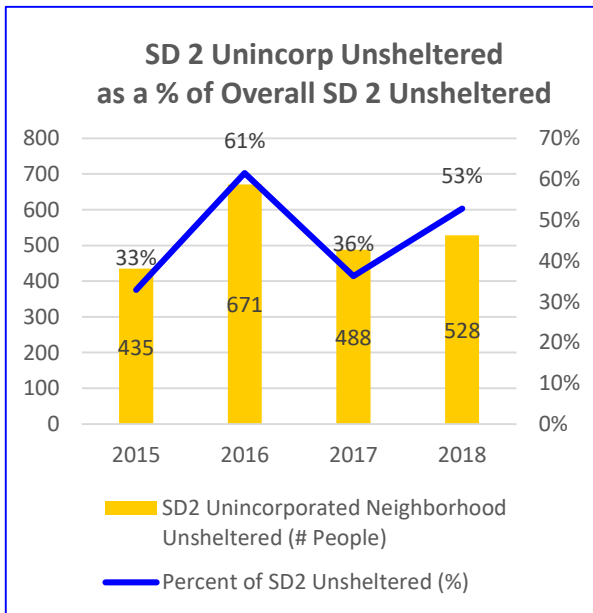


# 2018 Greater Los Angeles Homeless Count

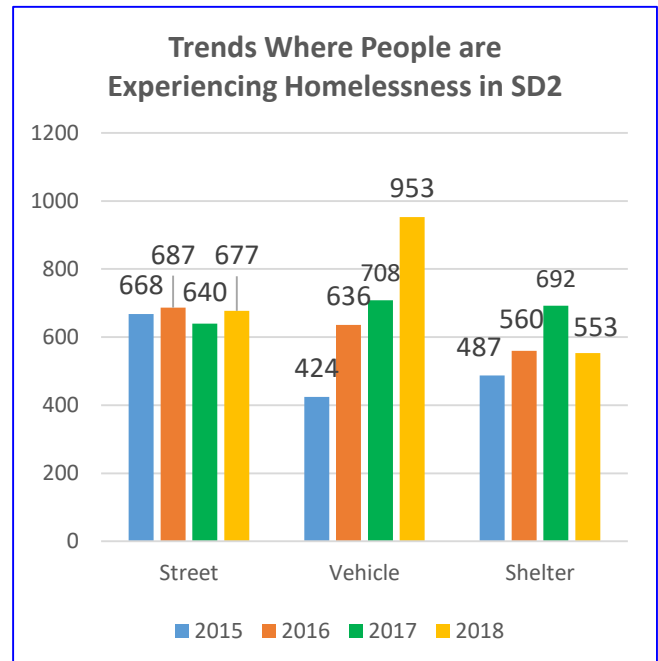
## SD 2 in SPA 8 Data Points

City/Community	2018 Street	2018 Vehicle	2018 Shelter	2018 City Total	2017 City Total	% Difference
Carson	81	381	0	462	378	22%
Gardena	13	34	0	47	237	-80%
Hawthorne	83	52	3	138	74	86%
Inglewood	187	73	245	505	335	51%
Lawndale	15	10	6	31	42	-26%
Unincorp Alondra Park	14	29	0	43	15	187%
Unincorp Compton	17	156	0	173	486	-64%
Unincorp Del Aire	0	14	0	14	32	-56%
Unincorp Lennox	78	97	0	175	143	22%
Unincorp West Athens	74	22	13	109	173	-37%
Unincorp West Carson	115	85	0	200	125	60%
DPSS Motel Vouchers *	0	0	286	286	n/a	n/a
<b>Total:</b>				<b>2183</b>	<b>2040</b>	<b>7%</b>

\* In 2018, LAHSA reported DPSS issued Motel Vouchers at the SPA level.



**53% of persons experiencing homelessness in the SD 2 portion of SPA 8 were in County Unincorporated areas in 2018.**



**People living in vehicles continue to be the leading growth in overall homeless in SD 2.**