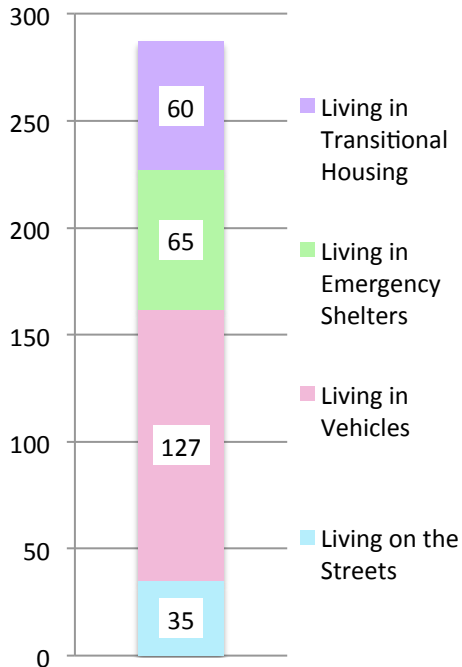


## San Pedro: 287 Homeless on January 30, 2013

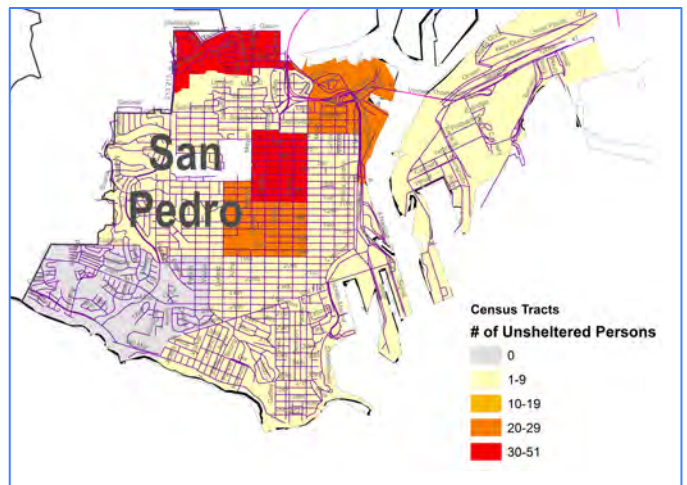


### Living Location Breakout

Transitional Housing	60
Emergency Shelter	65
Cars	15
Vans	50
Campers/RVs	62
Single Adults on the Street	31
Family Members on the Street	0
Unaccompanied Youth (<18) on the Street	0
Tents	2
Make-shift shelters	2

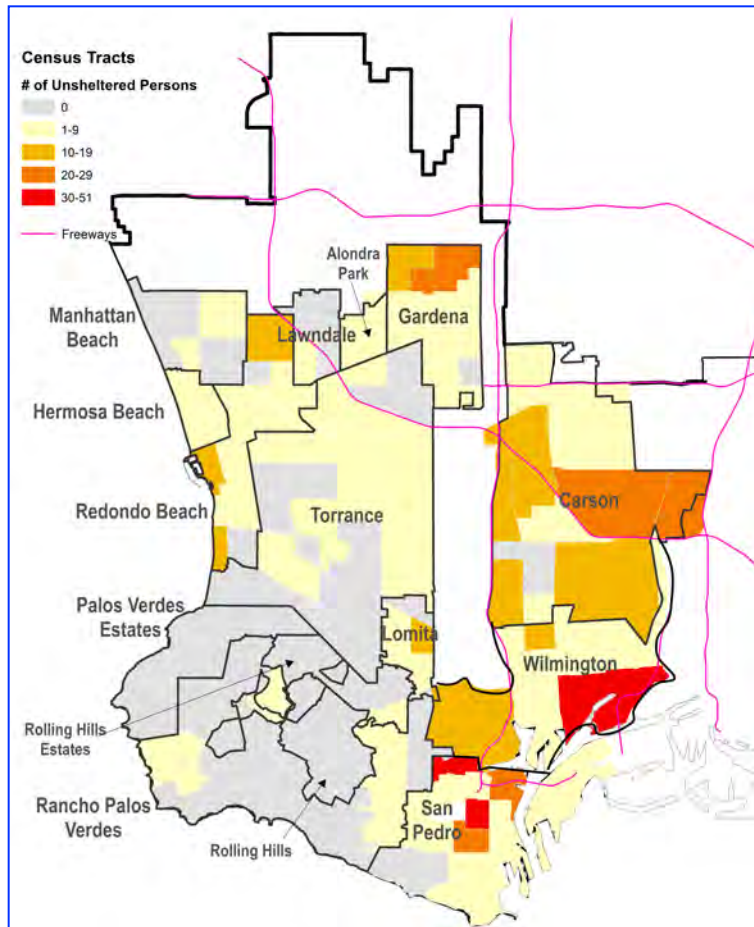
## San Pedro Unique Homelessness Characteristics

- Vehicular homelessness is acute in San Pedro, consisting of 78% of the unsheltered population.
- 11% of the South Bay's unsheltered population is located in San Pedro.
- Total of 237 Beds in 7 housing programs throughout San Pedro.
- There is only one Permanent Supportive Housing program in San Pedro. But for that program, there would be an additional 38 homeless persons in the San Pedro area.



San Pedro Density Map of Unsheltered Homeless

## SPA 8 South Bay Density Map of Unsheltered Homeless In “Opt-In” Communities on January 30, 2013



- 87% of the South Bay’s homeless population was unsheltered during the 2013 Count.
  - But for six permanent supportive housing programs, there would have been ~600 more homeless persons in SPA 8 during the count.
- 62% of unsheltered persons in SPA 8 resided in vehicles.
- The highest density areas of unsheltered homelessness were the LA City areas of San Pedro, Wilmington, Harbor City and Harbor Gateway, and the cities of Carson and Gardena. Of the beach cities, Redondo Beach had the highest unsheltered persons count.
- Only “Opt-In” communities completing 100% of their census tracts during the Homeless Count are shown. (Note: Several areas that likely have high unsheltered populations were not completely counted, including Inglewood and Hawthorne.)