



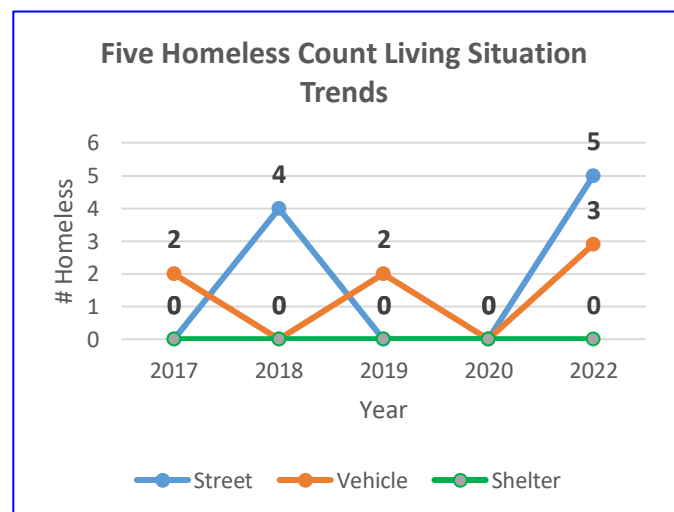
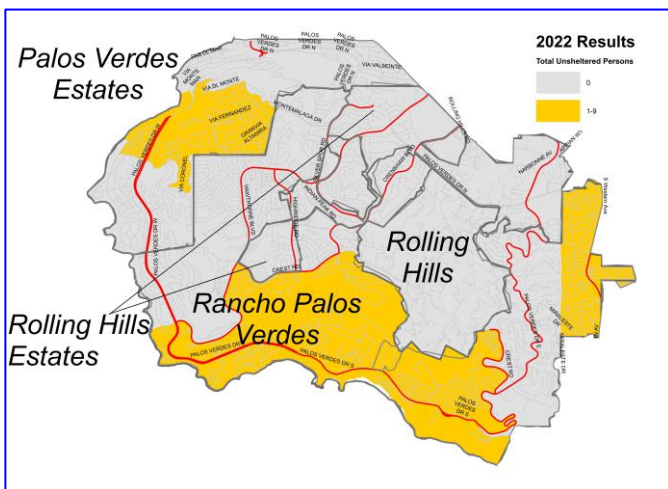
# 2022 Greater Los Angeles Homeless Count

## Cities of Palos Verdes Estates, Rancho Palos Verdes, Rolling Hills, and Rolling Hills Estates 8 Persons Experiencing Homelessness on February 23, 2022

### Changes since 2020

- While overall homelessness rose collectively among the four Palos Verdes municipalities, 2 persons were found in Palos Verdes Estates, and 6 were in Rancho Palos Verdes along commercial corridors.

Location	Living Situation [Notes 1,2]	2017	2018	2019	2020	2022 [Note 4]
<b>Unsheltered Street</b>	Adults on Street	0	4	0	0	5
	Family Members on Street	0	0	0	0	0
	Unaccompanied Minors on Street	0	[Note 3]	[Note 3]	[Note 3]	[Note 3]
	Make-Shift Shelters	0	0	0	0	0
	Tents	0	0	0	0	0
<b>Unsheltered Vehicle</b>	Cars	2	0	0	0	1
	Vans	0	0	2	0	2
	RVs	0	0	0	0	0
<b>Sheltered</b>	Emergency Shelter	0	0	0	0	0
	Transitional Shelter	0	0	0	0	0
<b>Total</b>		<b>2</b>	<b>4</b>	<b>2</b>	<b>0</b>	<b>8</b>



Data Source: Los Angeles Homeless Services Authority (LAHSA), lahsa.org

- Notes**
- In 2019, LAHSA changed the city/neighborhood boundaries and then retroactively applied these to the 2016-2018 Counts. The table and graph reflect the original Count results reported for those years, and hence may be different from LAHSA's Community data. SBCEH rounds the data differently than LAHSA, which might also result in slightly different reporting numbers.
  - The following results are reported at the SPA level only: Domestic Violence Shelters, Youth Count results, and DPSS-issued motel vouchers.
  - Unaccompanied Minors on the Street data is only available at the SPA/Regional level.
  - The 2021 unsheltered count was canceled because of the COVID-19 pandemic. The 2022 was delayed one month because of the Omicron variant surge.